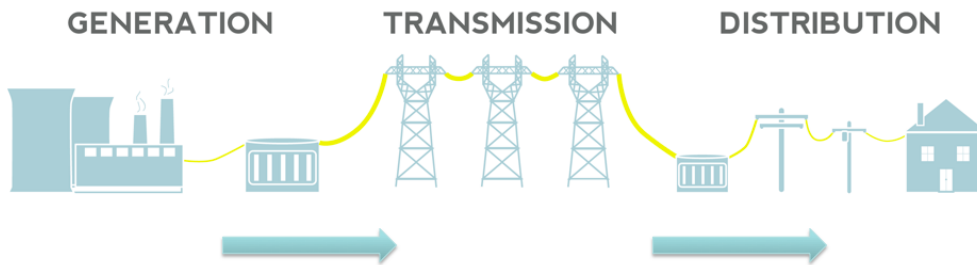


ESI – Electric System Inspection Program



ESI is a GIS/GPS based application that maximizes the value of field asset inspections and performs outstanding work management capabilities. ESI can get your company up and running quickly on a flexible system that delivers a key component of reliability centered maintenance at a fraction of the cost of more costly and higher maintenance systems.

Designed for the rigors of flight and detailed for Ground, Climb & Shake patrols.



ESI stands apart from other field inspection systems. Made for aerial inspections, ESI's single key press menu system and push button driven interface enables rapid, accurate observation input which greatly reduces the potential for mistakes and maximizes the value of critical, costly aerial inspection time.



Streamlining Inspection and Maintenance of Electric Power Lines

ESI is specifically designed to assist with the management of conditions observed during inspection patrols of the electric system. ESI can be used to inspect all voltages of the electric system, typically 12kV and above.

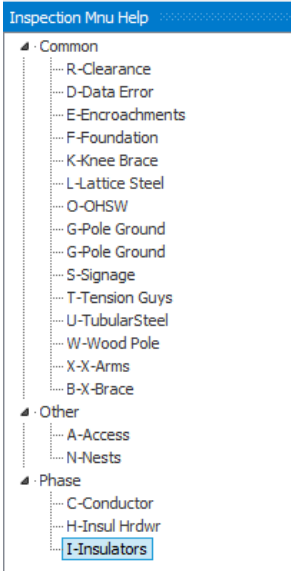
Transmission Towers

Inspection Menus and Priority System

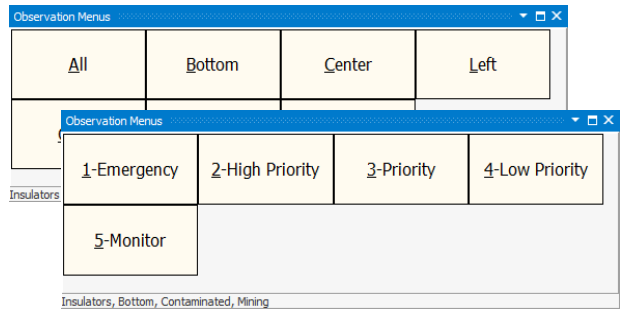


Distribution Power Poles

ESI's inspection menu system was designed to be extremely fast and easy to use. The customizable inspection menus are single keystroke and/or push button oriented so recording observations takes a few seconds or less. ESI's inspection menus can contain different branches and different priority codes for each observation.



Inspection Menu Tree



Inspection Menus Buttons

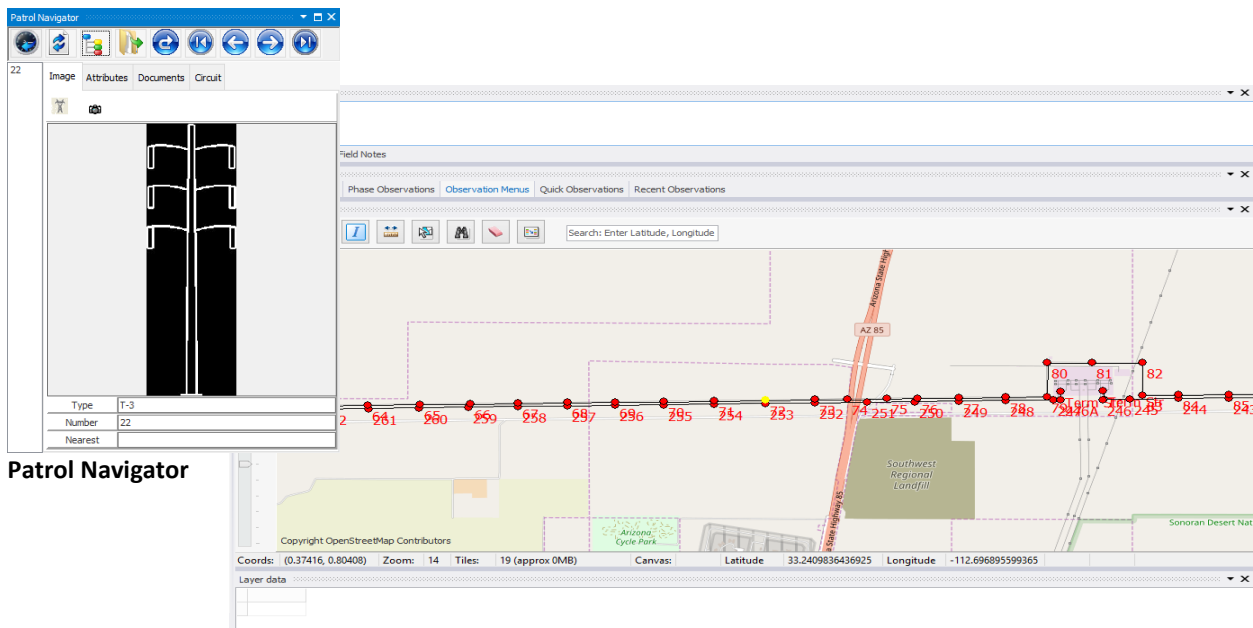
With the proper use of the priority system, ESI helps ensure that maintenance efforts are focused on addressing observed conditions that directly affect safety, system reliability and timeliness of cost-effective repairs. Conversely, using ESI helps you avoid spending money prematurely to repair items that should wait until it is more cost effective to do so.

The level of detail for each inspection menu path can change based on the type of patrol being performed. For example, conducting a ground patrol would look much different than a patrol from the air.



ESI Patrol Navigator

The Patrol Navigator enables you to navigate through your assets via circuits, by predefined or custom patrols, by selecting an asset on the Patrol Map or automatically with the GPS nearest asset function.



Patrol Navigator

Patrol Map

ESI Features & Benefits

Features

- GIS & GPS enabled patrol maps
- GPS route recording
- Synchronization with the corporate data store - GIS, standards, drawings, parts lists, etc.
- Touch screen enabled
- Inspect all type of assets electric systems, cell towers and other field assets
- Rapid inspection observation recording - record observations in a matter of seconds
 - Record structure defects
 - Record conductor defects
 - Record vegetation encroachments, ROW
- Customizable inspection observation buttons, single key stroke inspection menu paths
- Patrols
 - Patrol by circuit via the Circuit Selector
 - Patrol by custom patrol via the Patrol Builder
 - Jump to other circuits or assets that are not part of current patrol via touch or click
 - Current patrol view history
 - Enables the inspector to quickly jump back and forth between previously inspected assets
- Collect notes and pictures
- Smart inspection mode, structure images, phasing, etc. switch based on flight direction
- Drive up inspection mode
 - No need to select a patrol, drive up inspection mode locates the nearest asset via the GPS
- Inspection history
 - Maintains a list of assets visited for all patrols
 - Inspection history reporting
- Report designer
 - Enables to the user to build custom reports
- Intuitive map-based work order viewing and updating
- 3rd Party Work Management System integration

Benefits

- Specifically designed for aerial, ground and climb & shake inspections
- Quick and easy observation recording
- GIS enabled and GPS tracking
- Unlimited inspection history
- Helps to meet government requirements for asset inspections
- Helps to improve system reliability and safety standards
- Helps lower inspection costs
- Work management systems integration

System Requirements

Windows 2000 +
Any GIS or spatial data system,
MS SQL Server/MS SQL Server Express and/or MySQL
GPS, Touch screen laptop or tablet

See ESI in action:

Contact the Integrated Group for a personal demonstration and see the benefits for yourself.

Contact

GLOBAL | Integrated Group, LLC | 520.400.3675

www.igrpsol.com